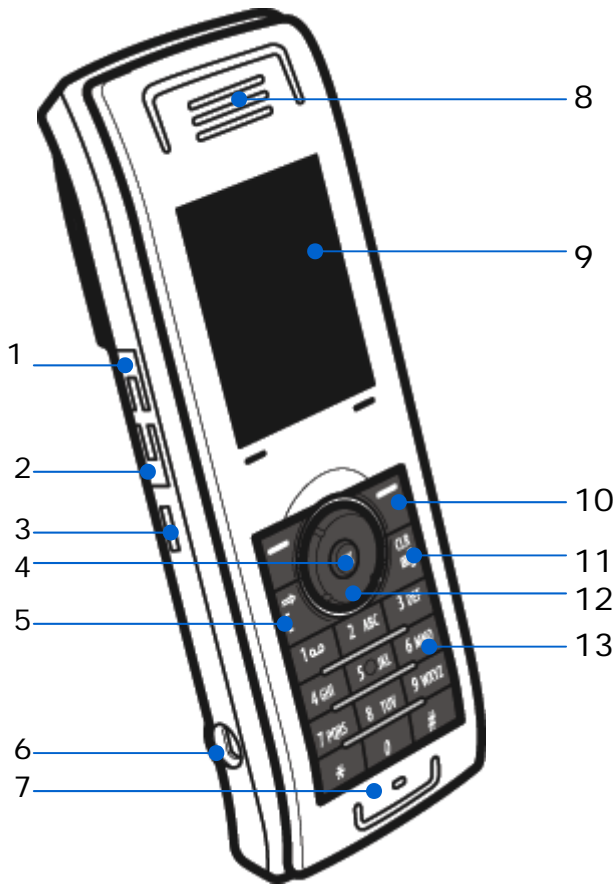


Quick Reference Guide G355 / G955



1. Volume up key
2. Volume down key
3. SOS key
4. OK key
5. Off hook/enquiry (green phone key)
6. Headset jack connector
7. Microphone
8. Earpiece
9. Color display
10. Soft keys
11. On hook/clear/power (red phone key)
12. Navigational keys
(Up/Right/Down/Left Nav. Key)
13. Keypad (0-9, *, #)

keys 1-9: long press for speed dialling (if programmed).

*: used in text editor to enter a star symbol and special characters, or to insert pause in dial mode.

0: used in text editor to enter space and special characters.

#: used in text editor to capitalize letters and type numbers. Long press activates the silent mode.

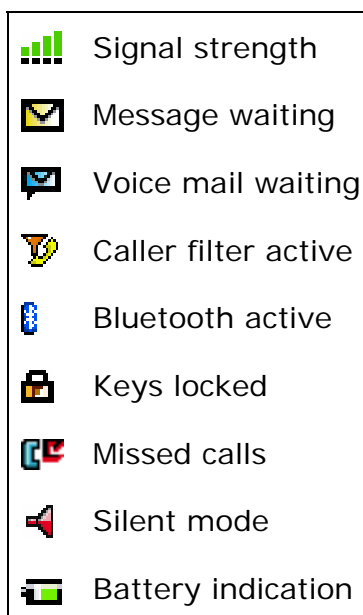
Package Contents:

handset	2 belt clips
battery	removing tool

Main menu items:



Top row icons:



GETTING STARTED

Turning the phone on and off

Press and hold the **Red phone** key for a few seconds.

Lock/unlock your phone

In **Idle** mode, press the **Ok** key, and then press the **Lock** soft key.
To unlock, press the **Ok** key, and then press the **Unlock** soft key.

Make a call

In **Idle** mode, type the number you want to dial, and then press the **Green phone** key.

Answer a call

Press the **Green phone** key.

End a call

Press the **Red phone** key.

Reject a call

Press the **Reject** soft key.

Make an enquiry call (also known as broker call)

During a call, press the **Green phone** key and dial the number of the party you want to consult. You can toggle between the two parties, by pressing the **Green phone** key.

To transfer the first call to the enquiry call party, press the **Red phone** key.

Change the volume

During a call, press the **volume up** or **volume down** buttons on the side of the phone.

Use the speakerphone

During a call, press the **Spk on** soft key. To deactivate: press the **Spk off** soft key.

Mute a call

During a call, press the **Mute** soft key. To turn the microphone on again, press the **Unmute** soft key.

Listen to voicemail messages

In **Idle** mode, press the **Menu** soft key, choose **Messaging, Inbox**, select **Listen to voicemail**, and then scroll to the required message. Press the **Select** soft key.

Note: You may need to enter your voicemail number first.

Write a text message (G955 only)

In **Idle** mode, press the **Menu** soft key, choose **Messaging, New and draft**. Now you can enter text.

Make a shortcut

In **Idle** mode, press the **Menu** soft key, choose **Settings, General**, and select **Shortcuts**. Now you can assign a function to one of the navigational keys.

Make a speed dialling key

In **Idle** mode, press the **Menu** soft key, choose **Contacts**.

Select the contact that you want to assign and press the **More** soft key.

Choose **Speed dial** and press **OK**.

Scroll to the speed dialling key number that you want and press the **Add/Replace** soft key. (If a number has already been assigned to this key, it will be replaced.)

Register the handset

In **Idle** mode, press the **Menu** soft key, choose **Settings, Connectivity, Register**.
Select the required base, **OK**.

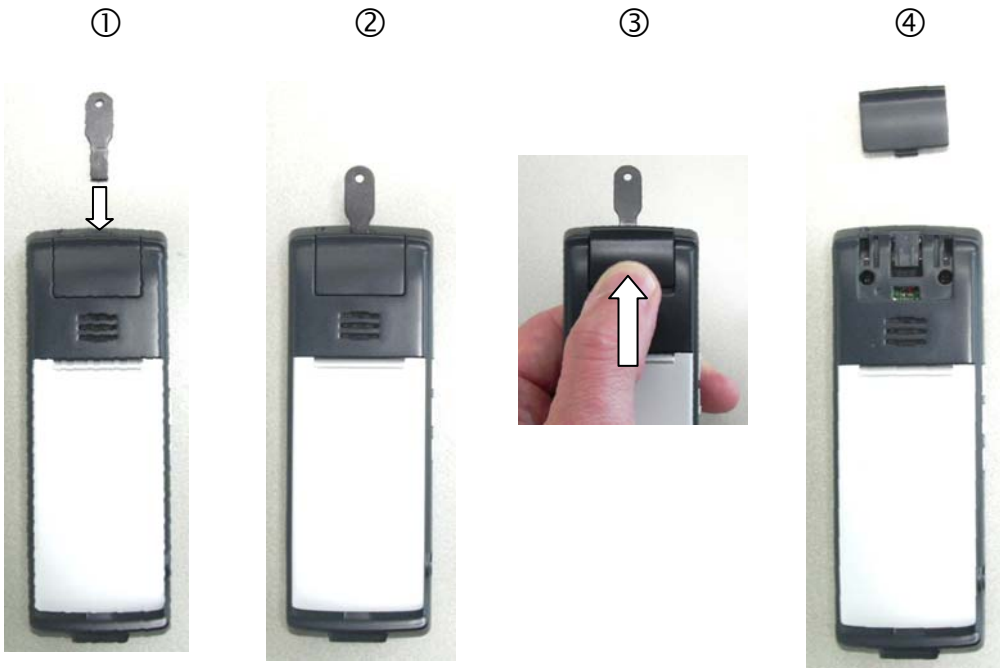
Enter the Park code, **OK/Skip**. *If only one DECT system is available, then just press Skip.*

Enter the PIN code, **OK**. *The PIN is generated by the DECT Manager.*

Enter Network Name, **Save**. *This will be shown on the idle display.*

Enter Number, **Save**. *This is the phone number assigned to the DECT handset.*

REMOVING TOOL



MENU FUNCTIONS

Using the menu

There are 6 menus, all of which you access from the Main menu. A menu may have several tabs. Use the navigational keys to go to the required tab. The soft keys may provide you with additional options.

To enter the main menu: in **Idle** mode, press the **Menu** key. To leave a menu, press the **Red phone** key.

Menu list

1. Messaging

- New and draft ¹⁾
- Inbox ¹⁾
- Sent messages ¹⁾
- Settings
 - Overwrite old ¹⁾
 - Sent messages ¹⁾
 - Voicemail number

2. Calls

- All
- Answered
- Dialed
- Missed

3. Contacts

- Private
 - New contact
- Central

4. Calendar

5. Settings

- General
 - Profiles
 - Time & date
 - Language
 - Shortcuts
 - Security
 - Phone lock
 - Automatic keylock
 - Change PIN code
 - Handset name
 - Reset settings²⁾
 - Reset memory card (*optional*)
 - Status
- Sounds & alerts
 - Ring volume
 - Ring external
 - Ring internal
 - Ring unknown call
 - Normal msg. alert ¹⁾

- Urgent msg. alert ¹⁾
- Ring emergency ¹⁾
- Increasing ring
- Alert volume
- Alert tone
- Increasing alert
- Vibrator ¹⁾
- Key sound
- Confirmation sound
- Coverage warning

• Display

- Wallpaper
- Themes
- Startup screen
- Power save

• Calls

- Units
- Answer mode
 - Normal
 - Any key
 - Automatic
- Caller filter ¹⁾
- Emergency call
 - Message
 - Number
- Silent charging

• Connectivity

- Register
- Deregister
- Network select
- Bluetooth (*optional*)

6. Accessories

- Calculator
- Stopwatch
- Alarms
 - Alarm
 - Recurrent alarm

¹⁾ This menu item is only available on the G955.

²⁾ This resets menu settings to their original values but has no effect on your contacts etc.